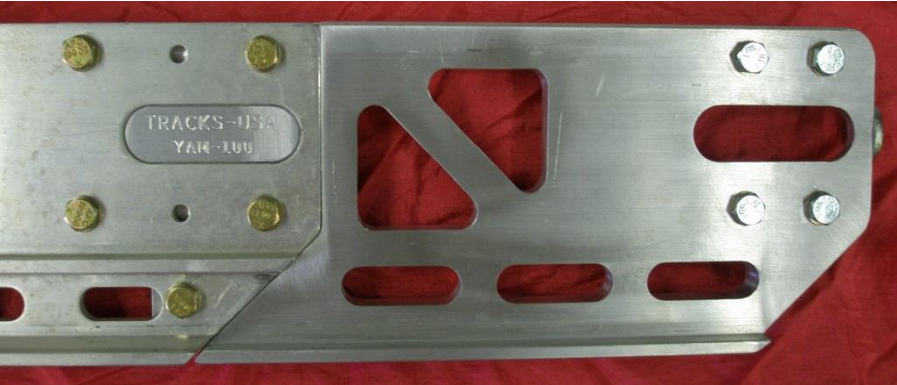


Tracks USA Rail Extension Installation:

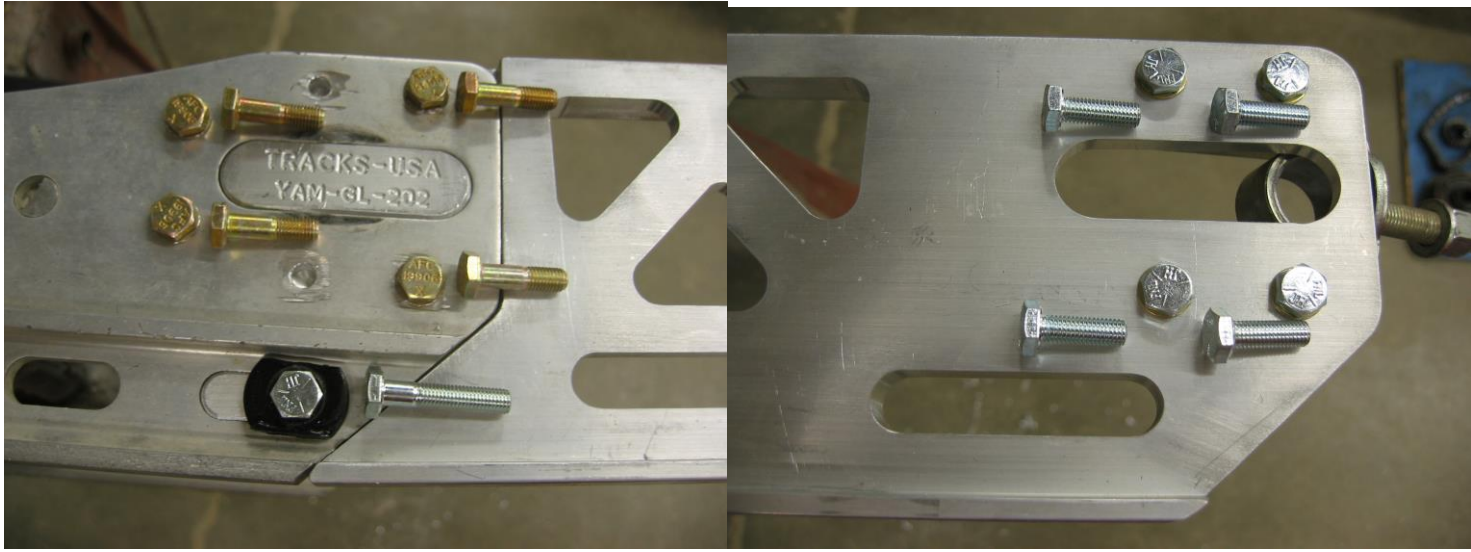
Polaris: X-tra 10 / X-tra 12 / Edge & IQ



Yamaha 2004 & Older / '07 & Newer Phazers



Yamaha 2005 & Newer



Arctic Cat CFR's & F-Series

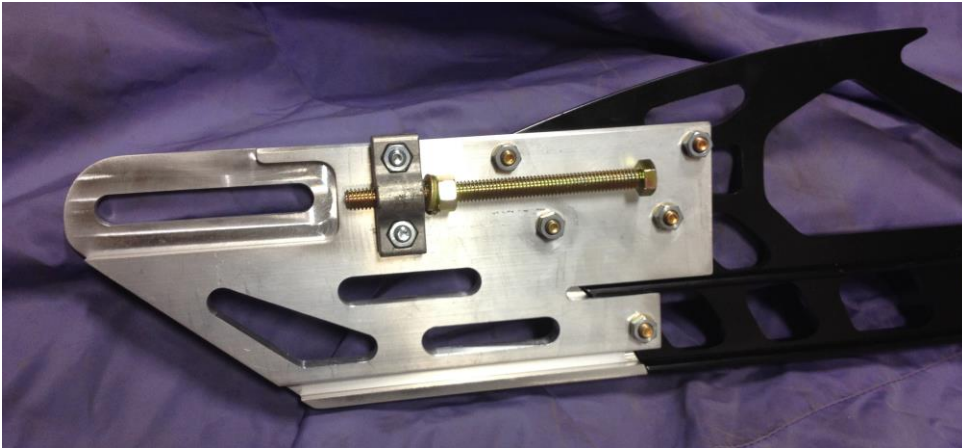


Arctic Cats will require the spacer blocks
To be trimmed on top and bottom to fit
Into Tracks USA Rail Extensions as noted
By arrows.

Ski-Doo '08 & Newer XP Chassis



Arctic Cat ProCross / ProClimb and 2014 Yamaha Viper



*Note for ProCross / ProClimb & 2014 Yamaha Viper as seen in picture below, you will have to remove the lip in the aluminum spacer seen at bottom of photo.



Remove this lip

