

Professional Turf Products




Clippings

Volume 17 Number 4

Fall 2014

PTP's MISSION STATEMENT:

TO EXCEED THE NEEDS OF BOTH OUR INTERNAL AND EXTERNAL CUSTOMERS WITH
SERVICES SUPPORTING THE SALES & DISTRIBUTION OF OUR PRODUCT

 **1956 Labor Day Stamp**
featuring a design from
the mosaic mural at the
AFL-CIO headquarters



See P.2 for more history
on Labor Day

There is still some doubt as to who first proposed the holiday.

Was it **Peter J. McGuire**, general secretary of the
Brotherhood of Carpenters or **Matthew Maguire**,
the secretary of Local 344 of the International
Association of Machinists in Paterson, N.J., who
proposed the holiday in 1882 while serving as
secretary of the Central Labor Union in New York?

>> Cont. on Page 2



For more information on the history of Labor Day, scan here >>>

Or visit: <http://www.history.com/topics/holidays/labor-day>



Letter From the President



Well, the summer is now almost behind us and although I have really tried not to talk about the weather in a Clippings issue, I have to say that it sure was a pleasant summer! With the three or four cold fronts we all experienced this year, we know why summer was over so quickly!



Now it's time for **Hello School Zones!** So, hang up the phone, turn down the tunes, (and of course, no texting) but most of all - **watch the KIDS!** Yes, the traffic and school zones will be a challenge for the first few weeks but eventually we will all get the hang of it again!



Do you pack your kids lunches for school? If not, how about taking the time? It doesn't have to be fancy, just go buy some brown bags at the store; fruit (frozen grapes are an awesome addition), lunch meat, or peanut butter & jelly (unless allergies are an issue), fig newtons, cheese sticks or cubes, crackers, small boxes of raisins, small water bottles, Capri-Sun (freeze them when you pack a sandwich with lunch meat); or Moon Pies (these can be frozen too); chips, pickle, hard boiled eggs (I suggest you peel them); cookies, etc., and test your skills.



>>Continued on Page 4

The Origins of Labor Day

A celebration of the American labor movement and dedicated to the social and economic achievements of workers, Labor Day constitutes a yearly national tribute to the contributions workers have made to the strength, prosperity, and well-being of our country.

Although there is much debate on *who actually was the first to propose the idea of the holiday*, we do know this: In August of 1894, following the deaths of a number of workers at the hands of the U.S. military and U.S. Marshals during the Pullman Strike, the United States Congress unanimously voted to approve rush legislation that made Labor Day a national holiday. President Grover Cleveland signed it into law a mere six days after the end of the strike (after all, it was an election year!).



Miners watching a parade with their children. Silverton, Co - 1942

The form for the celebration of Labor Day was outlined in the first proposal of the holiday: a street parade followed by a festival for the workers and their families. This became the pattern for Labor Day celebrations. Speeches by prominent men and women were introduced later, as more emphasis was placed upon the civil significance of the holiday.

Labor Day: a good-bye to summer

Over the years, Labor Day has come to be seen as the last long weekend of summer rather than a day for political organizing. As of last year, only 11.3% percent of American workers belonged to unions, down from a high in the 1950's of nearly 40 percent, though nearly all have benefited from the victories of the Labor movement.

The first Monday of September has become an opportunity for friends and families to gather and clog the highways, the picnic grounds, and their own backyards — and bid farewell to summer.

And most importantly to many - **Labor Day marks the beginning of the NFL and college football seasons.** NCAA teams usually play their first games the weekend of Labor Day, with the NFL traditionally playing their first game the Thursday following Labor Day.



PTP members, Adam Mock & Bobby Anderson, Grillin' out back!



The First Labor Day Parade - 1882



See Page 3 for our COLLEGE FOOTBALL CHALLENGE >>

"Perfection is not attainable, but if we chase perfection we can catch excellence."
- Vince Lombardi



SEARCH AND FIND:

IF YOU SPOT THE HIDDEN TORO RAKE-O-VAC, CALL Julie Hazzard AT 817-785-1900, ext 5167,
THE FIRST TEN CALLERS WILL RECEIVE A PRIZE!



Meet your PTP Customer Support Representatives



Tavis Harvey
Customer Support, Parts Manager



How long have you been with PTP? **8 Years**

What do you like most about being on the PTP team?
PTP is truly a team environment

Who's your favorite college football team? **Texas Longhorns (my Alma Mater)**

Who is your favorite Customer? **The one that places the next parts order!** 😊

Look for other CSRs to be profiled in future issues!

Did you know...

A device invented as a primitive steam engine by the Greek engineer, **Hero of Alexandria**, in the 1st Century A.D., is used today as a rotating lawn sprinkler?



Here's a checklist of things to ask your Account Executive the next time he stops by!

- ❑ "Do you have my College Football Schedule magnets?" (*collectors items!*)
- ❑ "Tell me about the Tines Promotion"
- ❑ "Help me go through these baseball cards your parts dept has been sending to me to see if I have a winner!"
- ❑ "How much more do I need to spend on parts before Nov 1 to lock in 2015 Performance Parts Pricing?
- ❑ May I have one of your business cards in case someone needs a referral?

🍁 **COLLEGE FOOTBALL CHALLENGE:** Below are the **END of 2013** Season Rankings for the Big 12 and the SEC football teams. Fill in what you think the Conference Rankings will be at the **END of the 2014** season and the entry with the most correct rankings will win a prize.



| <u>End of 2013</u> <u>Season</u> | <u>Your Prediction</u> <u>2014</u> |
|-------------------------------------|---------------------------------------|
| 1 Baylor | 1 _____ |
| 2 Oklahoma | 2 _____ |
| 3 Oklahoma State | 3 _____ |
| 4 Texas | 4 _____ |
| 5 Kansas State | 5 _____ |
| 6 Texas Tech | 6 _____ |
| 7 West Virginia | 7 _____ |
| 8 TCU | 8 _____ |
| 9 Iowa State | 9 _____ |
| 10 Kansas | 10 _____ |

| <u>End of 2013</u> <u>Season</u> | <u>Your Prediction</u> <u>2014</u> | <u>End of 2013</u> <u>Season</u> | <u>Your Prediction</u> <u>2014</u> |
|-------------------------------------|---------------------------------------|-------------------------------------|---------------------------------------|
| EAST | | WEST | |
| 1 Missouri | 1 _____ | 1 Auburn | 1 _____ |
| 2 S. Carolina | 2 _____ | 2 Alabama | 2 _____ |
| 3 Georgia | 3 _____ | 3 LSU | 3 _____ |
| 4 Vanderbilt | 4 _____ | 4 Texas A&M | 4 _____ |
| 5 Florida | 5 _____ | 5 Mississippi | 5 _____ |
| 6 Tennessee | 6 _____ | 6 Ole Miss | 6 _____ |
| 7 Kentucky | 7 _____ | 7 Arkansas | 7 _____ |

Name : _____

Company: _____

Tear off your entry and send it to: Professional Turf Products, ATTN: Julie Hazzard
1010 N. Industrial Blvd, Euless, TX 76039 / Entry deadline is October 15, 2014

(Yes - it will require a stamp - which will cost you a little more than the one on our front cover!)



CLARK, Cont. from Page 1

Trust me, you will get frustrated if you don't plan the night before, but get up a bit early because you'll need to make the lunch in the morning. You might even sneak in a handwritten note here and there! When your son or daughter sees you after school/work you might not even have to ask how their lunch was. The kids will most likely tell you what they liked, what they didn't (what they swapped with friends), and your challenge is to improve the brown bag experience the next day. Obviously, it's not about just the food. It's a way to show your kids how much you love them, make memories for your kids and open the door to conversation all while feeding them healthy food to fuel their bodies and minds.

Have an Awesome, Safe and Happy school year!

Eddie



PTP is pleased to be a sponsor of the Eules Trinity Trojan Marching Band.

The band

displayed our logo proudly during marching practice, as they got ready for the new school year.



Catfishin' Family: Twenty year old West Tawakoni resident, Lucy Millsap and her parents took three different top honors at **Noodling Tournaments** in Texas & Oklahoma for catching large catfish with their bare hands!

September Snow Days?



Not exactly.... but it's never too early to start preparing for Winter!

See the Toro GM 7200 with **POLAR TRAC™** on Page 6 >>>



A Small Town Minnesota Man Finds His Passion in Retirement

The tiny town of Vining, MN is known to many as the home of Astronaut **Karen Nyberg**. Another resident who is gaining notoriety is Karen's father, **Ken Nyberg**, who can take a welding torch, metal rods and some used lawnmower blades and create a sculpture. In addition to all the statues he has on display all over Otter Tail County (ranging from life size to giant size), the Bull that was commissioned by **The Toro Co.** is now proudly displayed in front of the company's headquarters based in Bloomington, Minnesota.



Ken Nyberg, 73, a retired construction foreman, says, "It's my getaway. I don't have to hang around the house all the time. My retirement years have been the best ones of my life and the fact that there's no schedule, I can just do as I please." The biggest collection of Nyberg's sculptures can be found in a park next to Big Foot Gas and Grocery, along Highway 210 on Vining's west end. The lot is now named Nyberg Park. <http://nybergsculptures.com>

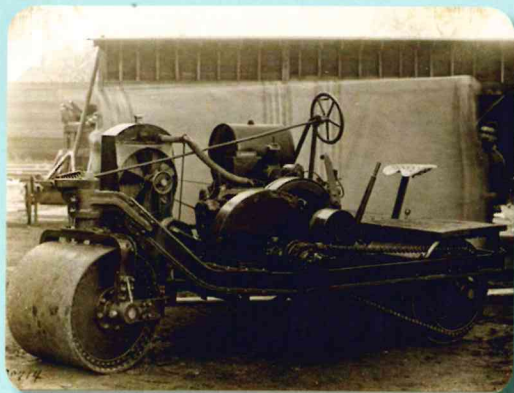


A close-up look at the mower blades used to build Nyberg's Toro sculpture



Rollin', Rollin', Rollin'...Keep those Toro's Rollin'...

In 1918, Toro introduced its first product built specifically for golf: a power fairway roller based on a Bull tractor frame.



Today, the Toro GreensPro® 1200 series is the most recent incarnation of the turf roller.

Refurbished Equipment for Sale



Club Car
Turf II

\$5,000

\$155/mth*



Club Car Turf
252 G

\$5,500

\$170/mth*



Toro
Workman
(07266)

\$5,000

\$155/mth*



Turfco CR-10

\$18,000

\$556/mth*



Toro
Z Master
(only 63 hrs!)

\$12,499

\$340/mth*



Toro
GM 3280
4WD

\$11,999

\$371/mth*



Toro
GM 3500

\$16,999

\$525/mth*



Toro
Greensmaster
3250

\$14,000

\$433/mth*



Toro
GM 580-D
Sold AS IS

\$7,000

\$217/mth*

* for 36 mths Rent-To-Own transaction. Based on credit approval

Need parts for a John Deere or Jacobsen unit?
We have quite a few trade-in units on our lot.
Call Julie Hazzard at PTP (ext #5167) for more info.

Available equipment list
updated WEEKLY at: www.proturf.com

Scan here to go directly to Refurb Offerings:



Superintendent and Crew make U.S. Senior Open a huge success

"The golf course is fantastic," Oak Tree resident Bob Tway said on the first day of competition July 10. "It's hard, but it's fantastic...I'm just so pleased it turned out to be in the shape that it's in. You know, a lot of people have worked really, really hard. Everybody is proud of this place. That's why we all have continued to live here. We love it."

"It's been a great five years of preparation working with Josh and his crew," said USGA Managing Director of Rules and Competitions Jeff Hall prior to the U.S. Senior Open kicking off. "A fantastic field and test of golf. Nobody will pretend their way to the U.S. Senior Open Championship. Josh Cook and his team have been fantastic in their approach and attention



Josh Cook

to detail. The golf course is magnificent."

Josh Cook is the Superintendent of Oak Tree National in Edmond, OK. He



began maintaining golf courses at age 18, and earned a degree in Turf Grass Science from Penn State University. Prior to his arriving at Oak Tree in January 2012, he had been working at a Pete Dye (designed) golf course in Newport, NC, but was delighted to take the opportunity at Oak Tree National.

Cook, himself says: *"We talk about this team (his crew) as a family. They are all intelligent, hardworking, motivated. We talk about pulling a mule out of a ditch. When we're all pulling in unison, that's what makes me the most proud."*

Toro Groundsmaster® 7200 with Polar Trac™ System

The POLAR TRAC™ system converts the Groundsmaster 7200 into a snow removal machine complete with two rubber tracks and a climate control cab in less than four hours by two people.



Additional snow attachments:

- Snow blower
- Rotary broom
- Angled snow blade
- V-plow



Who remembers the score for Superbowl XLVIII?



A few extra ways to enjoy your family:

- Read your kids a classic book.
- Give each family member a hug for 21 days in a row (to develop a habit).
- Pick 3 nights of the week for the TV to remain off.
- Go to the library as a family.
- Eat dinner together 7 days in a row.
- Praise your spouse and children - in their presence - to someone else.
- Spend an evening going through old pictures from family vacations.
- Take each kid (individually) out to breakfast once a month for a year.
- Write each member a letter sharing why you value them.

Little House on the Freeway

Golfdom Magazine interviewed Lupe Moreno, Superintendent at Shary Municipal Golf Course in Mission, Texas. When he was asked, "What's your favorite piece of equipment?" His response was: "My Toro computer for irrigation. I love it, that'd be the last thing I'd ever give up"

Financial Tip: According to *USAToday*, the Tooth Fairy is contributing 8% less this year (an average of \$3.40 per tooth). Perhaps "he / she" should consider leaving stamps as an alternative!. They'll be worth a lot more than face value when the USPO goes out of business!

Have you thought about the REAL cost of "Will-Fit" Parts?

Substituting will-fit parts may save a few bucks up front, but it could ultimately cost you more in downtime and repairs

Original Equipment Quality

They are exactly the same parts used to manufacture the original equipment.

Tested, Proven Performance

The parts have been rigorously tested to make sure they can withstand the stress of daily maintenance.

Protection Against Damage

Using sub-performing parts may result in damage to your equipment, which can end up costing much more to repair. Why take that chance with machines you depend on every day?

Right Part, Right Specs

If your equipment isn't working, your grounds crew isn't either. Genuine parts are made to the exact engineering specifications of your equipment, so you know you're getting the right part the first time. That means your staff can get back to work faster.



Both Toro™ and Club Car® are proud to give back to Industry Associations such as: GCSAA (Platinum & Silver Sponsorships), CMAA (Bronze & Gold), NGCOA and The PGA.



Look! 

THREE REASONS TO BUY PARTS NOW *



1. Beat The Price Increase
2. **\$1500 LOCKS YOU IN** for
2015 Performance Parts Pricing Program
(and you receive a **Toro™** Centennial hat)
3. **\$2500** locks you in for:
2015 Performance Parts Pricing,
You also get: a **Toro™** Centennial hat *and*
Split Payment terms - 30,60,90 days, *and*
FREE FREIGHT on this order.

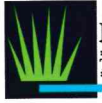
Call PTP's Parts Dept
(817) 785-1900, ext 1

* Club Car part purchases also qualify



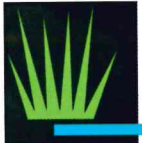
Purchases must be made by Oct 31, 2014 to qualify
ALL BOOKING ORDERS SHIP COMPLETE
Allow 2 weeks for delivery





PROFESSIONAL
TURF PRODUCTS

1010 N. INDUSTRIAL BLVD, EULESS, TX 76039



PROFESSIONAL
TURF PRODUCTS

Professional Turf Products Clippings Newsletter / Volume 17, No. 4 / Fall 2014

Keep an eye on our
website for special
PROMOTIONS

[www.proturf.com/wp/
promotions](http://www.proturf.com/wp/promotions)



Professional Turf Products has five offices and covers six states:

Euless, Texas

1010 N. Industrial Blvd 76039

(817) 785-1900

Houston, Texas

5520 Brittmoore Rd. 77041

(713) 983-0700

San Antonio, Texas

5026 Service Center Drive 78218

(210) 666-0808

Tulsa, Oklahoma

3621 S. 73rd E. Ave Bldg #1 74145

(918) 622-8676

Lenexa, Kansas

10935 Eicher Dr, Lenexa, KS 66219

(913) 599-1449



www.proturf.com