

NOTES:

1) TAPPED HOLE SIZE IN INCH SYSTEM

28	210000	1	BLADE HUB
27	200040	1	RETAINING RING
26	200001	1	RETAINING RING
25	200000	3	RETAINING RING, EATON 916R
24	190028	1	I.D. TAG, 20MM X 50MM
23	140033	1	PLUG, PRESSURE RELIEF, 1/2"-14NPTF
22	140017	1	PIPE PLUG, SO. HEAD, 1/8"-27NPTF
21	130002	10	LOCKWASHER, 3/8" SPLIT TYPE
20	120050	1	NUT, HEX SLOTTED, 1"-14UNS
19	110000	10	SCREW, HEX CAP, 3/8"-16UNC, GR 5
18	100001	1	COTTER PIN, 5 X 50
17	090000	1	SPACER
16	070136	VAR	GASKET, OUTPUT CAP .10mm
15	070135	VAR	GASKET, OUTPUT CAP .15mm
14	070134	VAR	GASKET, OUTPUT CAP .40mm
13	070133	VAR	GASKET, INPUT CAP .10mm
12	070132	VAR	GASKET, INPUT CAP .15mm
11	070131	VAR	GASKET, INPUT CAP .40mm
10	060061	1	SEAL, OUTPUT, 3 LIP
9	060060	1	SEAL, INPUT, 3 LIP
8	050007	3	BEARING, BALL 208K
7	050006	1	BEARING, BALL 207K
6	040040	1	SHAFT, INPUT, 1 3/8"-SB
5	030003	1	GEAR, INPUT, 22T, 1:1.47
4	030002	1	PINION, OUTPUT 1:1.47 15T
3	020161	1	CAP, INPUT w/SHIELD MTG. HOLES
2	020003	1	CAP, OUTPUT
1	010001	1	HOUSING, STANDARD

DET PART NUMBER QTY DESCRIPTION



OMNI GEAR

TITLE RC-30 1:1.47 STD. INPUT 1 3/8"-SB OUTPUT STD. HUB		DRAWN BY RAM	
		APPROVED BY DAK	
		DATE 8-6-97	
SCALE NTS	ACAD REF. NUMBER WIP	OMNI PART NUMBER 250001	REV

SOME OH

14-H

40 HP 5'46" RC 30  
OMNI 250001

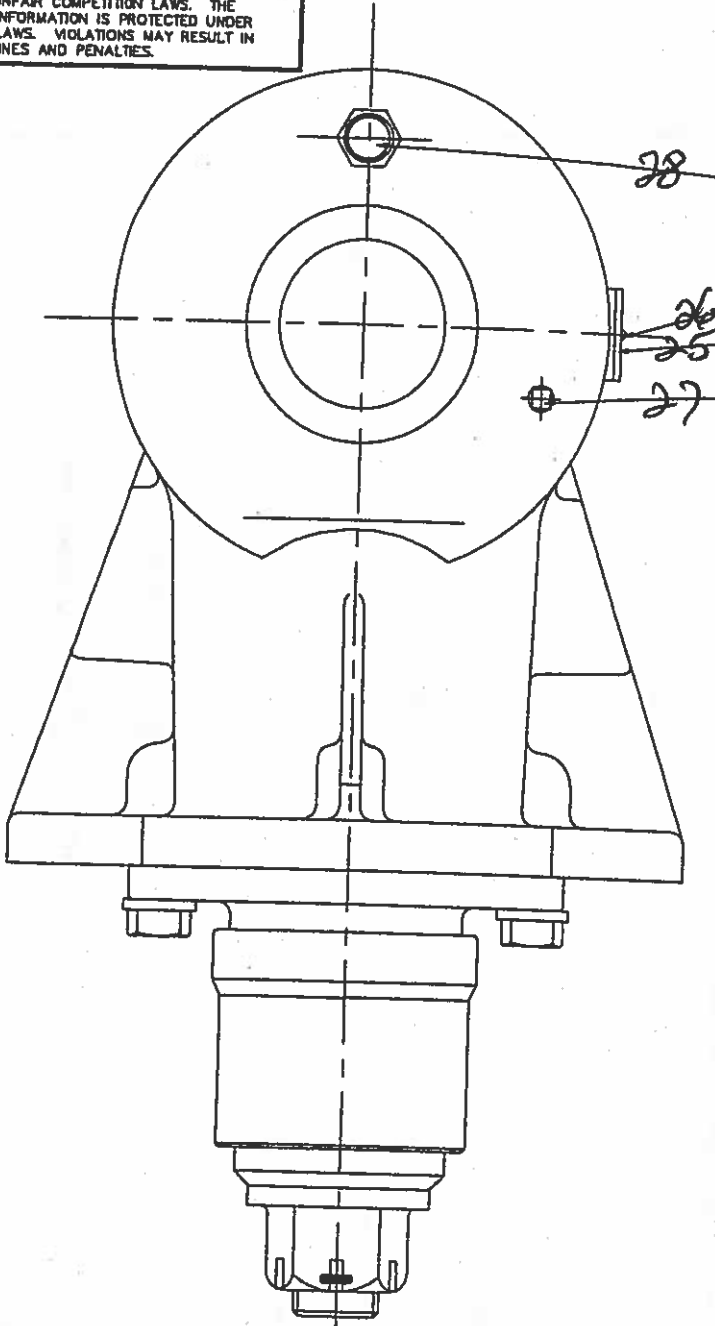
OMNI GEAR



RC 30  
5x6

OMNI

TRADE SECRET - CONFIDENTIAL AND PROPRIETARY  
EXCLUSIVELY OWNED BY OMNI USA, INC., 7502 MESA DRIVE,  
HOUSTON, TEXAS 77028. ANY COPYING, USE OR DISCLOSURE  
WITHOUT THE WRITTEN PERMISSION OF OMNI USA, INC. IS  
STRICTLY PROHIBITED. THIS MATERIAL IS PROTECTED UNDER  
TRADE SECRET AND UNFAIR COMPETITION LAWS. THE  
EXPRESSION OF THE INFORMATION IS PROTECTED UNDER  
FEDERAL COPYRIGHT LAWS. VIOLATIONS MAY RESULT IN  
CIVIL AND CRIMINAL FINES AND PENALTIES.



30	200040	1	SNAP RING
29	SEALANT, USED BETWEEN HOUSING AND CAP, PLUG.		
28	140033	1	PLUG, PRESS RELIEF
27	140017	1	PIPE PLUG
26	240001	2	RIVET 2x5
25	190028	1	I.D. TAG
24	040040	1	INPUT SHAFT
23	060002	1	OIL SEAL $\phi 34.9 \times \phi 54 \times 9.5$
22	200001	1	RET. RING
21	030003	1	GEAR INPUT 22T
20	020161	1	CAP INPUT
19	050006	1	BEARING, BALL 207K
18	070131	VAR	GASKET 0.40
17	070132	VAR	GASKET 0.15
16	070133	VAR	GASKET 0.10
15	050007	3	BEARING, BALL 208K
14	200000	3	RET. RING
13	090000	1	SPACER
12	010001	1	HOUSING
11	070134	VAR	GASKET 0.40
10	070135	VAR	GASKET 0.15
9	070136	VAR	GASKET 0.10
8	020003	1	OUTPUT CAP
7	130060	10	SPRING WASHER M10
6	110190	10	BOLT M10x30
5	060003	1	OIL SEAL $\phi 39.7 \times \phi 54 \times 9.5$
4	030002	1	OUTPUT PINION
3	210013	1	BLADE HUB
2	120050	1	NUT
1	100001	1	COTTER PIN 5x45
DET PART NO.		QTY	DESCRIPTION

OMNI GEAR®

TITLE ASSEMBLY  
RC-30 SERIES  
(1.47:1)

DRAWN BY  
ZHH  
APPROVED BY  
DATE  
19 AUG 99

SCALE	ACAD REF. NUMBER	OMNI DWG. NUMBER	REV
NTS	25-250001-S	250001	-
IES			

NOTES:

- GEAR BACKLASH SHOULD BE 0.15-0.35mm WITH NO LOAD.
- AXIAL PLAY SHOULD NOT EXCEED 0.4mm WITH 20KG LOAD. IF NOT, PARTS AND ASSEMBLY SHOULD BE CHECKED PER REQUIREMENT, IF THEY ALL ACCORDING TO SPECIFICATION THEN THIS ASSEMBLY IS QUALIFIED.
- BOLT TORQUE OF 10 PCS OF 110000 IS 29-39Nm.
- CUT SUCH THAT 1-3 THREADS OF PLUG REMAIN EXPOSED WHEN TORQUE OF PLUG-140000 IS 20-25Nm AND TORQUE OF PLUG-140017 IS 5 Nm.
- PRESSURE TEST MUST BE PERFORMED, THE AIR PRESSURE SHOULD NOT BE LESS THAN 65484 Pa 30 SECONDS AFTER INCREASED THE PRESSURE TO 68804 Pa.
- ALL PARTS SHOULD BE CLEANED BEFORE ASSEMBLY, BEARING SHOULD BE SOAKED IN OIL 20# (OR APPLIED WITH GREASE) BEFORE ASSEMBLY.
- DIMENSION H SHOULD BE WITHIN 4.8+0.3 AND NOT LESS THAN 4.8 mm WHEN 210013 AND 030002 MATE, AND NUT TORQUE IS 147 Nm. PARTS 210013 AND 100001 SHOULD BE

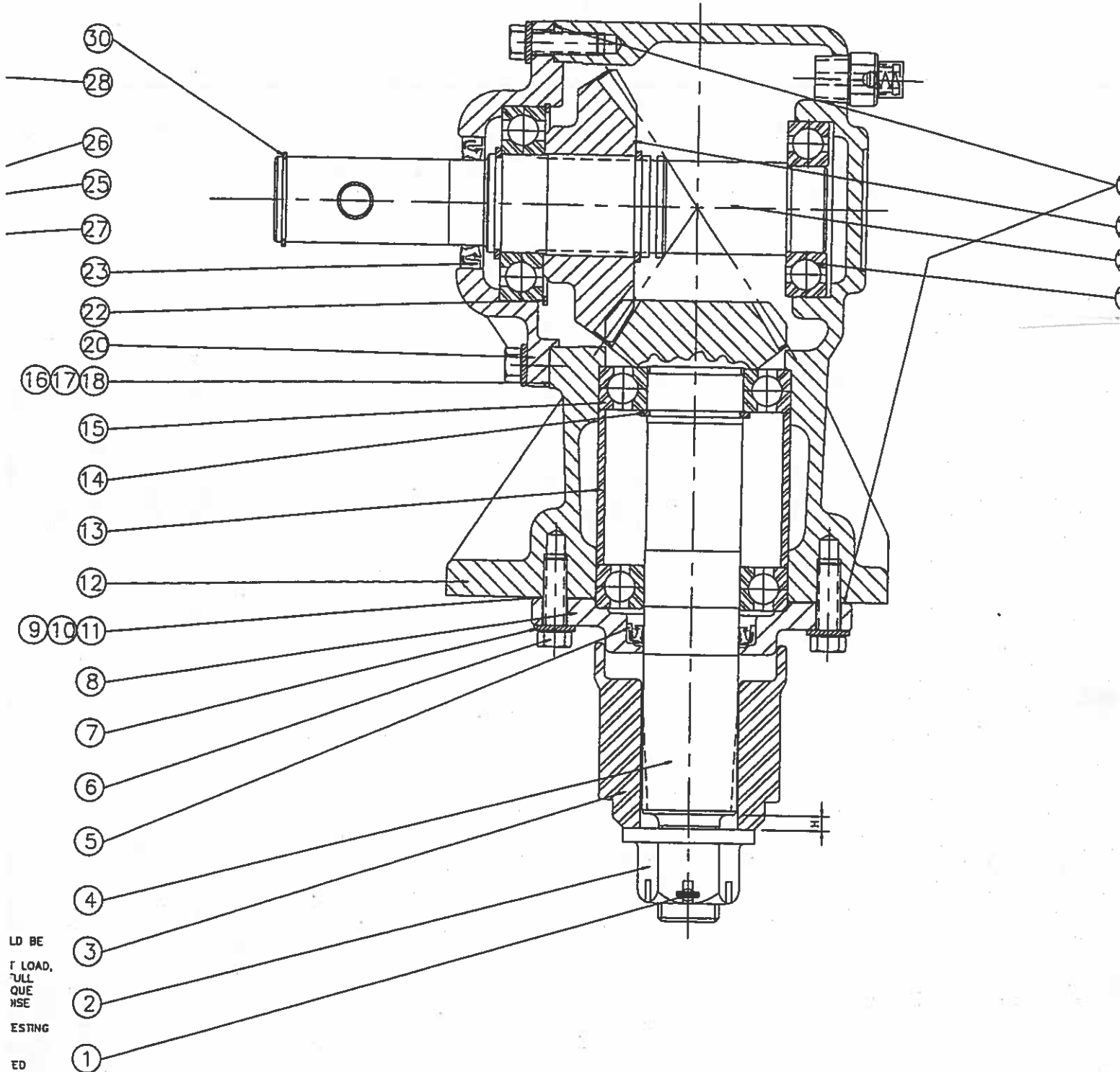
- PACKAGED INDIVIDUALLY, PART 120050 SHD INSTALLED ON SHAFT 030002 LOOSELY.
- ALL ASSEMBLES SHOULD BE TESTED WITH AND 10% OF THEM SHOULD BE TESTED WITH LOAD. SPEED OF INPUT SHAFT 540 n/m, T OF OUTPUT SHAFT 179 Nm FOR 1 MINUTE. SHOULDN'T EXCEED 90db(A) AT 1m HEIGHT. ADD OIL 20# TO THE CENTER OF GEAR FOR REMOVE AFTER TESTING.
- PRIME HOUSING AND CAP, SHAFT SHOULD COVERED WITH PLASTIC TUBE AFTER BE PA WITH ANTRUST PAINT.
- ORIGINAL RECORDS OF CHEMICAL COMPN MECHANICAL PERFORMANCE OF MATERIAL S BE KEPT.
- STAMP MANUFACTURING DATE ON I.D. TAG AFTER ASSEMBLY INSPECTED OK.

RC 30 5'6'

I:\Users\ACADJRWSOG CD 6-1-07\SOGCTRL\25-1250001-S.DWG

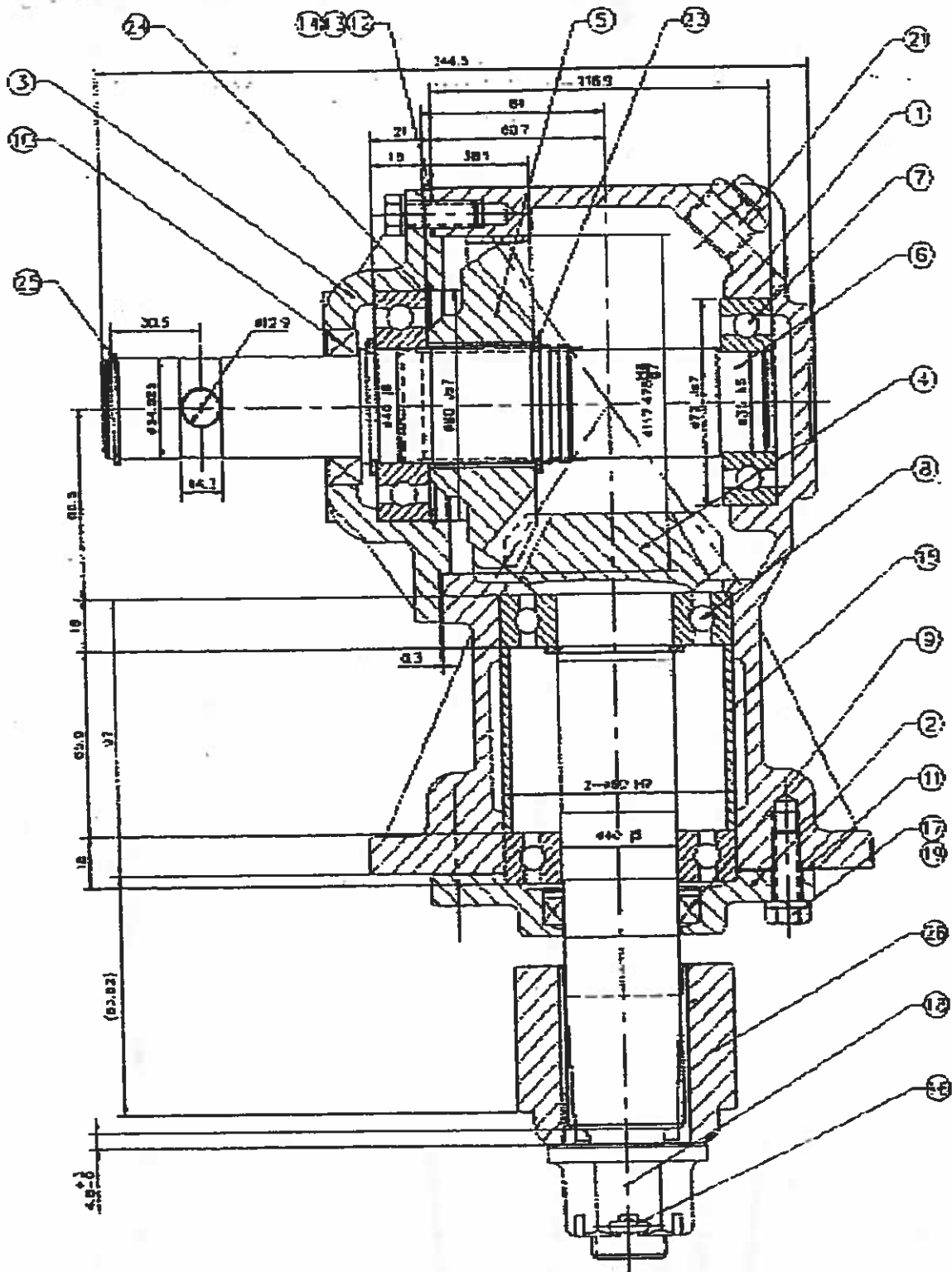
OMNI

SYMBOL



LD BE  
T LOAD,  
FULL  
QUE  
NSE  
ESTING  
ED  
T AND  
JULD  
30028

CONF IRME 19489-941000



1. ALL DIMENSIONS ARE IN MILLIMETERS UNLESS OTHERWISE SPECIFIED.  
 2. DIMENSIONS ARE TO BE TAKEN TO THE CENTER OF THE HOLE OR THE CENTER OF THE PIN.  
 3. DIMENSIONS ARE TO BE TAKEN TO THE CENTER OF THE HOLE OR THE CENTER OF THE PIN.  
 4. DIMENSIONS ARE TO BE TAKEN TO THE CENTER OF THE HOLE OR THE CENTER OF THE PIN.  
 5. DIMENSIONS ARE TO BE TAKEN TO THE CENTER OF THE HOLE OR THE CENTER OF THE PIN.  
 6. DIMENSIONS ARE TO BE TAKEN TO THE CENTER OF THE HOLE OR THE CENTER OF THE PIN.  
 7. DIMENSIONS ARE TO BE TAKEN TO THE CENTER OF THE HOLE OR THE CENTER OF THE PIN.  
 8. DIMENSIONS ARE TO BE TAKEN TO THE CENTER OF THE HOLE OR THE CENTER OF THE PIN.  
 9. DIMENSIONS ARE TO BE TAKEN TO THE CENTER OF THE HOLE OR THE CENTER OF THE PIN.  
 10. DIMENSIONS ARE TO BE TAKEN TO THE CENTER OF THE HOLE OR THE CENTER OF THE PIN.  
 11. DIMENSIONS ARE TO BE TAKEN TO THE CENTER OF THE HOLE OR THE CENTER OF THE PIN.  
 12. DIMENSIONS ARE TO BE TAKEN TO THE CENTER OF THE HOLE OR THE CENTER OF THE PIN.  
 13. DIMENSIONS ARE TO BE TAKEN TO THE CENTER OF THE HOLE OR THE CENTER OF THE PIN.  
 14. DIMENSIONS ARE TO BE TAKEN TO THE CENTER OF THE HOLE OR THE CENTER OF THE PIN.  
 15. DIMENSIONS ARE TO BE TAKEN TO THE CENTER OF THE HOLE OR THE CENTER OF THE PIN.  
 16. DIMENSIONS ARE TO BE TAKEN TO THE CENTER OF THE HOLE OR THE CENTER OF THE PIN.  
 17. DIMENSIONS ARE TO BE TAKEN TO THE CENTER OF THE HOLE OR THE CENTER OF THE PIN.  
 18. DIMENSIONS ARE TO BE TAKEN TO THE CENTER OF THE HOLE OR THE CENTER OF THE PIN.  
 19. DIMENSIONS ARE TO BE TAKEN TO THE CENTER OF THE HOLE OR THE CENTER OF THE PIN.  
 20. DIMENSIONS ARE TO BE TAKEN TO THE CENTER OF THE HOLE OR THE CENTER OF THE PIN.  
 21. DIMENSIONS ARE TO BE TAKEN TO THE CENTER OF THE HOLE OR THE CENTER OF THE PIN.  
 22. DIMENSIONS ARE TO BE TAKEN TO THE CENTER OF THE HOLE OR THE CENTER OF THE PIN.  
 23. DIMENSIONS ARE TO BE TAKEN TO THE CENTER OF THE HOLE OR THE CENTER OF THE PIN.  
 24. DIMENSIONS ARE TO BE TAKEN TO THE CENTER OF THE HOLE OR THE CENTER OF THE PIN.  
 25. DIMENSIONS ARE TO BE TAKEN TO THE CENTER OF THE HOLE OR THE CENTER OF THE PIN.  
 26. DIMENSIONS ARE TO BE TAKEN TO THE CENTER OF THE HOLE OR THE CENTER OF THE PIN.

RC 30 5' + 6' 1:1.47  
 SOME 4'