



THE BEST SINCE 1960





We are celebrating our 6th decade of building the best pontoon boat in the United States!

FROM WACO CRAFT TO ALOHAPONTOONS.COM

Our longevity since 1960 has allowed our company to lead the pontoon industry with many important innovations throughout the years. We have earned a reputation for "Design Uniqueness." We were the first company to build an upper sundeck and the first to build a sun cushion enclosure over the outboard engine and fuel compartments, a huge innovation at the time. This design is now found on virtually all of our competitor's pontoon boats.

Our design leadership and superior quality product has now become a new model year tradition. We have always demonstrated very prompt, friendly and helpful service. We refer to it as "Southern Hospitality." We receive many calls throughout the year for a small part needed on a vintage 1960s model Aloha pontoon that now has its 3rd outboard engine installed on it. These are some of the reasons we have been fortunate enough to hold the honor of being the oldest pontoon builder in the South and one of the oldest pontoon manufacturers in the United States.

We believe in offering the customer what they need and want. Many customers choose our brand because of the variety offered throughout the Aloha line. This year we are proud to introduce 16 Aloha pontoons to choose from. These models are presented with two series brand names "Paradise and Tropical Series." Each customer also has various colors and options that can be added to any of the 16 Aloha models.

We believe it takes years of boat manufacturing to build a superior product. We have chosen a path to produce a luxury pontoon boat. While all of our pontoon models are luxurious, it is specifically showcased with our Paradise Series line of Aloha pontoons. We are a winner of the Pontoon Deck Boat Magazine "Best Built" pontoon in the United States. We have many features on our pontoon boats that set us apart from the competition. Our "Design Uniqueness" truly gives Aloha the history, quality and elegance that set us apart from the competition. Our continued growth has allowed our company to expand into a larger new facility in Little Rock, Arkansas.

"We would rather explain the price, than apologize for the quality"

"WE BUILD THE BEST PONTOON IN THE UNITED STATES. IT TAKES TIME TO PRODUCE A SUPERIOR PRODUCT. OUR DESIGNS, QUALITY AND ATTENTION TO DETAIL INCLUDING PROMPT SERVICE HAVE PAVED THE WAY IN THE PONTOON BOAT INDUSTRY SINCE 1960."

Thomas F. Cox
President
Aloha Pontoon Boats
Waco Manufacturing Inc.





Teenagers may sun themselves until their heart's content on the upper Sundeck, which provides shelter for you as you dine on the main deck of this sleek craft. This boat's large deck will accommodate your family and their friends, making it a perfect setting for outdoor gatherings. This Aloha comes with our standard 100 gauge pontoons and 8' 6" deck. These features exceed industry standards.

Relax on our elegantly upholstered seating available in one of the many floorplans. We use high quality marine grade vinyl on top of our all aluminum seat frame, all made at our in-house upholstery department. Don't see a color you like? Have a crazy idea in mind? Let us know, we can customize most any colors!

"THE ONLY THING MORE INVITING THAN AN ALOHA GREETING MAY JUST BE THE FURNITURE. THE COLORS AND PATTERNS IN THE VINYL SET THE STANDARD FOR THE REST OF THE BOAT."

PONTOON & DECK BOAT MAGAZINE



FOR MORE INFORMATION:



PARADISE SERIES SUNDECK



PARADISE SERIES 300 SUNDECK PICTURED ABOVE

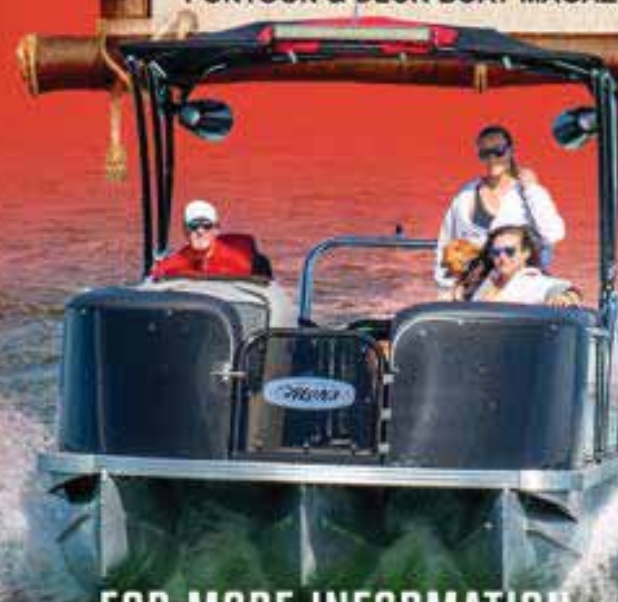


Some say Paradise is a cool breeze on a sunny day with plenty of shade. How could anyone disagree with this daydream? Our #1 selling model, the Arch Sport Tower, has everything one could want in a boat, from its solid construction to the sleek modern design, this boat is the total package. Sitting on the same all welded frame that is standard on all our models, along with our 2" round tube railing system and modern acrylic paneling, this boat is sure to turn heads!

Available in 23', 26' and 30' models, the Arch Sport Tower has a size to fit everyone's needs. This boat is loaded down with the latest in LED lighting and one of the best sound systems in the marine industry.

"ALOHA HAS BEEN BUILDING BOATS FOR OVER 64 YEARS AND CLEARLY UNDERSTANDS WHAT IT TAKES TO MANUFACTURE QUALITY PONTOONS. STRENGTH AND DURABILITY IS THE BACKBONE OF THIS SPECIFIC MODEL ALONG WITH A LOT OF UNIQUE FEATURES THAT ARE ALL PART OF THE STANDARD PACKAGE..."

PONTOON & DECK BOAT MAGAZINE



FOR MORE INFORMATION:



PARADISE SERIES ARCH TOWER



PARADISE 230 ARCH TOP PICTURED ABOVE



7

Some say Paradise is a cool breeze on a sunny day with plenty of shade. How could anyone disagree with this daydream? Our #1 selling model, the Arch Sport Tower, has everything one could want in a boat, from its solid construction to the sleek modern design, this boat is the total package. Sitting on the same all welded frame that is standard on all of our models, along with our 2" round tube railing system and modern acrylic paneling, this boat is sure to turn heads!

Available in 23', 26' and 30' models, the Arch Sport Tower has a size to fit everyone's needs. This boat is loaded down with the latest in LED lighting and one of the best sound systems in the marine industry.

"ALOHA HAS BEEN BUILDING BOATS FOR OVER 64 YEARS AND CLEARLY UNDERSTANDS WHAT IT TAKES TO MANUFACTURE QUALITY PONTONS. STRENGTH AND DURABILITY IS THE BACKBONE OF THIS SPECIFIC MODEL ALONG WITH A LOT OF UNIQUE FEATURES THAT ARE ALL PART OF THE STANDARD PACKAGE."

PONTON & DECK BOAT MAGAZINE



FOR MORE INFORMATION:



PARADISE SERIES ARCH TOWER



PARADISE 260 ARCH TOP PICTURED ABOVE





A boat loaded with recreational possibilities. You can dazzle your friends when you entertain on the Tropical Series Sundeck. Loaded with deluxe features, this boat and all of our Sundeck models provide a cooler shade area underneath the roof due to its thick construction materials. Want to make a big splash with your guests? Add our water slide with high pressure water pump to really get the party started!

"THE BOAT ITSELF IS BIG, YES, BUT YOU ADD THE SQUARE FOOTAGE OF THE UPPER SUNDECK AND YOU HAVE REALLY GOT ROOM TO SPREAD OUT. PLUS KIDS LOVE SUCH SUN DECKS. THEY MAKE FOR GREAT LAUNCHING PLATFORMS WHEN THEY REALLY WANT TO GET WET. AND, TEENS-TURNED-SUNWORSHIPPERS WILL FIND THIS SECLUDED PEDESTAL A PERFECT PLACE TO CATCH SOME RAYS."

PONTOON & DECK BOAT MAGAZINE

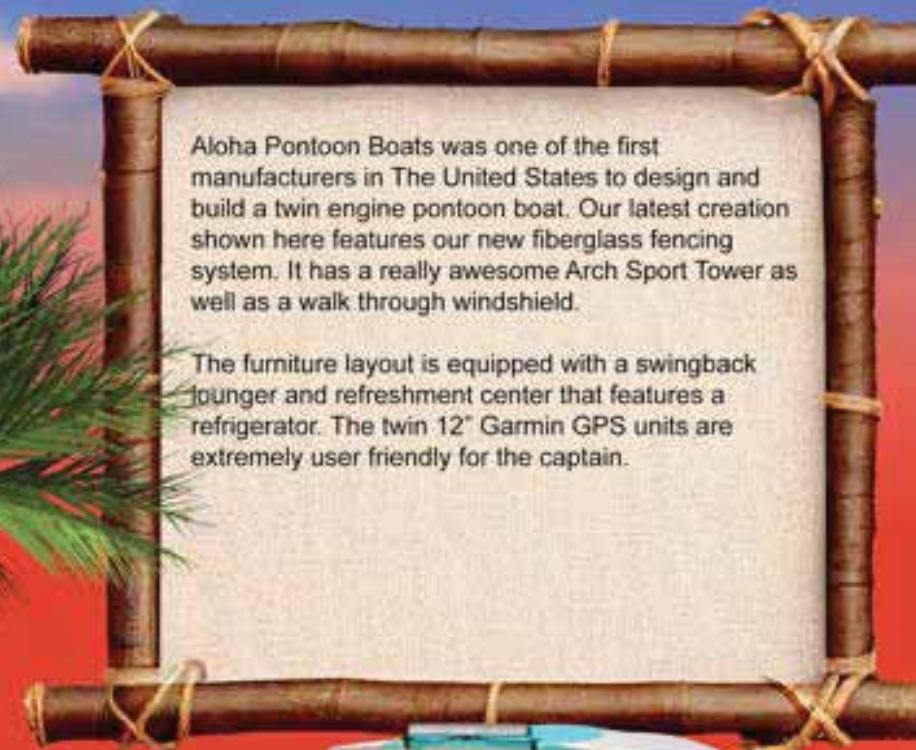


FOR MORE INFORMATION:



TROPICAL SERIES SUNDECK





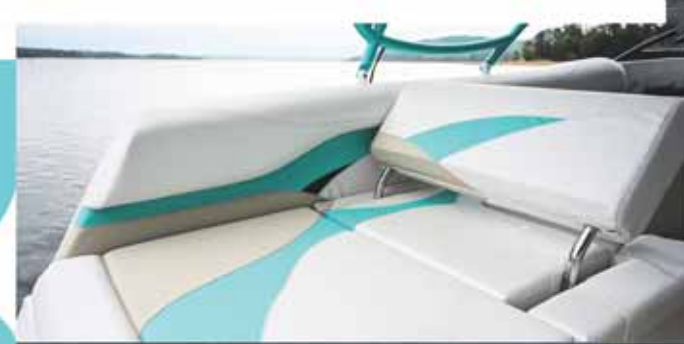
FOR MORE INFORMATION:



OAHU SERIES



OAHU SERIES TWIN X-32 PICTURED ABOVE





We are excited to introduce our "All New" Oahu Series! This stylish modern design features a fiberglass fencing system.

This beautiful pontoon boat provides the latest technology with twin Garmin navigation screens at the helm. The Oahu is loaded with LED RGB lighting as well as a walk through windshield and a folding electric tower and Bimini top.



FOR MORE INFORMATION:



OAHU SERIES



OAHU SERIES 260 PICTURED ABOVE





The "Limited Edition" Patriot is a true representation of ever strengthening honor to our country. This is your opportunity to own a limited edition symbol of pride and to show your loyalty whenever you are enjoying the great outdoors. The Patriot 260 Arch Sport Tower offers the same great luxury features you will find on all of our other Paradise models, with a patriotic look.

Aloha built a limited number of the Patriot beginning January 2002 through 2004. We are very excited to reintroduce a modern, upgraded version of one of our favorite Aloha Pontoons ever.



FOR MORE INFORMATION:

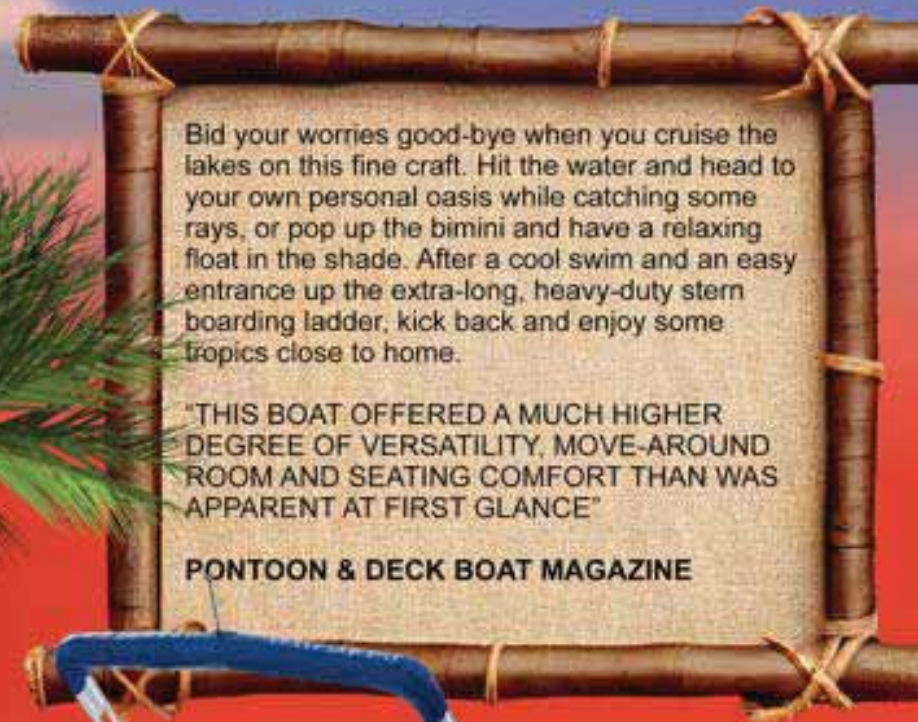


PATRIOT SERIES



PARADISE 230 ARCH TOP PICTURED ABOVE





FOR MORE INFORMATION:



MAHALO SERIES





Our new Boat Club Edition has the Paradise Series swept back compound curve bow built into our Tropical Series Models.

These boats come available in both a Bimini and a Sundeck model.

Available in select floorplans with no options required.

FOR MORE INFORMATION:

CLUB SERIES





Aloha Pontoon Boats "invented" the upper sundeck on pontoons in the early 1960's. Our "Aloha" brand name is well known for its sundeck models. Our new creation is the 12' wide, 40' long vessel that features 3 30" diameter pontoons. This boat has a unique oval refreshment center with a refrigerator. The chef can whip up food and refreshments for all onboard. We have equipped the 40' Skyview with 2 waterslides for the ultimate in water fun! We have also designed a very large restroom with holding tanks, vanity sink, and lighting. The helm displays multiple cameras views throughout the vessel so that the captain can keep an eye on all passengers. The helm is also equipped with 2 12" Garmin navigation screens. The sound system will get the party started and the RGB LED lighting will allow it to go on after the sun goes down!



FOR MORE INFORMATION:



PARADISE SERIES

400 SKY VIEW SUNDECK





We have developed an incredible Water Taxi. This model features a 12' wide, 50' long platform with 3 36" diameter pontoons. We have manufactured it to stringent standards. This unit will carry up to 45 passengers. It has a large restroom with fresh and gray water holding tanks as well as a large vanity. The captain has the latest features with dual 12" Garmin navigation screens, multiple cameras to view passengers, radar and side-scan graphs. This boat is designed for transportation throughout protected waterways. Please contact us for manufacturing lead times as well as the necessities your marina or resort



FOR MORE INFORMATION.



ALOHA 50' WATER TAXI



**TEST DRIVE ONE OF OUR ALOHA
PONTOON'S BEFORE YOU
PURCHASE YOUR NEXT BOAT!**

**ALOHA IS THE BRAND OF
CHOICE AT SUNTEX MARINAS
AND SUNTEX BOAT CLUBS.**





**"WE WOULD RATHER EXPLAIN THE PRICE,
THAN APOLOGIZE FOR THE QUALITY"**

**OUR WARRANTY IS BASED ON THE
GOLDEN RULE.**

Matthew Chapter 7, Verse 12



**Waco Mfg. Inc.
11850 Arch Street Pike
Little Rock, Arkansas 72206
501-753-2866
info@alohapontoons.com**

THE ALOHA GOLDEN RULE INCLUDES:

- Lifetime Hull and Deck Warranty**
Limited lifetime coverage for pontoons, cross-members, deck (wood or aluminum), and the transom.
- One Year Components**
Limited one year warranty for all gauges, electronics, and mechanical components.