



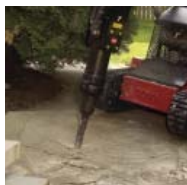
### Auger Powerhead with Bit

Drill holes from 6" to 30" in diameter up to 48' deep for planting shrubs and trees, installing fence posts or sona tubes. Why dig by hand when the Dingo can do it faster & easier! Optional extensions can achieve depths of up to 6'



### Brushwolf 42" Brush Hog Deck

If you have saplings, brush, tall weeds or undergrowth you need to remove quickly, the brushwolf attachment is the answer. Safely mows down up to 1 3/4" material and mulches it up. Much faster than brush cutting with hand held trimmers and reduces cleanup by mulching the material.



### Hydraulic Jackhammer

Simplifies the tough job of breaking concrete, asphalt, rock or brick during renovation jobs.



### Rotodairon Soil Renovator

Versatile attachment that can be used to cultivate and level soil as well as blend landscape materials, compost and fertilizer. This attachment will also bury debris such as stones, soil clods and grass.



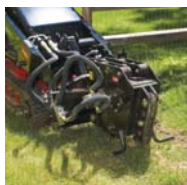
### Stump Grinder STX-38

Toro's newest extremely powerful 38hp track driven stump grinder. The STX-38 uses the same simple to use operator controls as the Dingo TX track drive loaders. High drive track design climbs hills, is gentle on turf, has a low center of gravity and will fit through a 3' gate. Leaves the competition in the dust!



### Trencher

High-torque, heavy-duty drive system guarantees performance in the toughest soil conditions. Dig trenches up to 42" below grade.



### Vibratory Plow-Pipe Puller

Greatly reduces a contractor's time spent on irrigation and cable installations. Optimizes pipe-pulling performance while minimizing turf damage during an installation.

## RENTAL TERMS

# RENTAL

## RATES 2019

1. Rental period is from 8a.m. to 5p.m., half day rentals are from 8a.m. to 12p.m. or 1p.m. to 5p.m. Half day rentals only available on noted units.
2. Weekly rates based on 40 hours of use maximum.
3. Weekend rates are Friday 5p.m. to Monday 8a.m.
4. Prices do not include 10% damage waiver or 6.25% MA sales tax.
5. Please report any problems or damage so we can correct the issue.
6. Machine must be returned clean and full of fuel. \$75 Cleaning and/or \$5 per gallon fuel charge will be assessed on units not returned in the same condition.
7. Please ask for instructions if you are not familiar with equipment.
8. Units cannot be returned after hours.
9. Damage waiver covers accidental damage only, does not cover abuse or misuse. See contract for details.
10. All operators of Dingos, Skid Steers, Track Loaders & Mini-Excavators will have to submit a valid hoisting license in order to rent equipment.
11. A credit card (not DEBIT) must be supplied on all rentals. We accept all major credit cards.
12. Valid Picture ID Required on All Rentals.



33 BOSTON POST ROAD SUDBURY, MA 01776  
P 978.443.1333 F 978.443.1311

[RICHEYANDCLAPPER.COM](http://RICHEYANDCLAPPER.COM)

[RICHEYANDCLAPPER.COM](http://RICHEYANDCLAPPER.COM)

Prices subject to change © Richey & Clapper, Inc. February 2019

## Toro Dingo Loader with Bucket

### 220 Wheel Drive

- Operating Weight 1,500lb
- Machine Width 42", 500# ROC

| Day   | Weekend | 7-Day |
|-------|---------|-------|
| \$160 | \$250   | \$615 |

### 427 Track Drive

- Operating Weight 2,000lb
- Wide Track - 42" Wide
- Narrow Track - 34" Wide, 500# ROC

| Day   | Weekend | 7-Day |
|-------|---------|-------|
| \$199 | \$298   | \$899 |

### TX1000 Track Drive

- Operating Weight 2,900lb
- Machine Width 42", 1,000# ROC

| Day   | Weekend | 7-Day   |
|-------|---------|---------|
| \$245 | \$368   | \$1,115 |

### Trailer Rental with Dingo

\$50 a day

### Dingo Attachments

#### Auger Powerhead with One Auger Bit

\$60 \$110

#### Additional Auger -6",-9",-12",-15",-18",-24",-30"

\$25 \$45

#### Bucket, Mass Hoisting Exempt

N/C in Lieu of Std. Bucket

Available for 220/TX427/TX525, no hoisting lic required

#### Brushwolf 42" Brush Hog Deck

\$160 \$205

#### Cement Bowl

\$50 \$75

#### Grapple Rake (Open Tooth Style)

\$60 \$85

#### Jackhammer (180lb Class)

\$160 \$205

#### Light Material Bucket 6.4cu/ft

\$25 \$25

#### Log Grapple (Swing Style)

\$60 \$85

#### Pallet Forks

\$25 \$40

#### Ramps for Dingo\* (9' x 12" Wide Aluminum)

\$15 \$25

\*(TX427/TX525 only)

#### Rotodairon Soil Renovator

\$160 \$205

#### Soil Leveler Attachment

\$25 \$40

#### Trencher 6" x 3'

\$95 \$160

#### Trench Filler

\$50 \$75

#### Vibratory Plow-Pipe Puller

\$100 \$160

#### Harley Rake 48" Manual Angle

\$150 \$190

## WEEKLY DINGO ATTACHMENT RENTAL SAVE 35%

### Trailers

#### 12' Dump Trailer (10,000 GVWR)

\$125 \$190

#### 16'-20' Equipment Trailer (10,000 GVWR)

\$95 \$145

#### Hitch Rental

\$10 \$15

## Skid Steer CAT226

- Operating Weight 5,900lb
- Machine Width 60" with bucket 66" 1,500# ROC

| Day   | Weekend | 7-Day   |
|-------|---------|---------|
| \$245 | \$368   | \$1,115 |

### Skid Steer Attachments

#### Pallet Forks

\$50 \$75

#### Tooth Bucket

\$15 \$50

#### Trailer Rental with Skid Steer

\$50 a day

## ASV/Terex PT-30

- Operating Weight 3,600lb
- Machine Width 48" 665# ROC



| Day   | Weekend | 7-Day   |
|-------|---------|---------|
| \$250 | \$375   | \$1,100 |

### ASV Attachments

#### Pallet Forks

\$25 \$50

#### Trailer Rental with Loader

\$50 a day

## Mini-Excavator Case CX31B

- Transport Weight 7,000lb
- Bucket Breakdown Force 7,180lb
- 18" Bucket with Hydraulic Thumb
- 5' 1" wide x 8' 3" tall
- Hydraulic Thumb is great for placing rocks
- Dig Depth 9' 3"
- Dump Height 11'
- Zero Tail Swing
- Open Cab



| Day   | Weekend | 7-Day   |
|-------|---------|---------|
| \$345 | \$515   | \$1,300 |

#### Trailer Rental with Excavator

\$50 a day

## Turf & Bed Care Equipment

### Aerator 20" Wide Hydro Drive\*

\$95 \$142

### Aerator 26" Wide (Ryan)\*

\$95 \$142

### Aerator 30" Stand On

\$275 \$412

### Bed Edger/Groomer (Sidewinder)

\$150 \$250

### Over Seeder 20" Hydro Drive\*

\$165 \$248

### Sod Cutter 18" (Ryan)\*

\$95 \$142

### Spring Tine Dethatcher\*

\$85 \$128

### Top Dresser

\$250 \$375

\*Half Day Rates Available (8-12 or 1-5)  
@ 30% off full day rate

## Commercial Mowers

### 48" Walker Mower w/ Catcher

\$225 \$338

### 48"-52" Hydro Walk Behind w/Catcher

\$125 \$188

### 52" Stand On with Catcher

\$175 \$263

### 60" Rider with Vacuum Catcher

\$235 \$353

## Misc. Equipment

### BackPack Blower\*

\$55 \$82

### Stand On Blower 23hp

\$209 \$315

### Stand On Blower 35hp / 37hp

\$245 \$375

### Brush Mower 24" (Billygoat)\*

\$115 \$173

### CutQuick 14" Cutoff Saw (Blade not incl.)

\$75 \$112

### Plate Compactor 18" Wide\* 4000lb Force

\$85 \$127

### Jumping Jack Compactor

\$95 \$142

### Stump Grinder Track Drive STX-38

\$325 \$488

38hp (additional cost for broken teeth)

34" machine width easily fits through 36" gates

\*\*\*All trailer rentals require a pintle hitch, functional electric brake controller, and a 7 way RV electrical connection. Labor to correct customer truck wiring problems billed at shop rate. Valid MASS lic and copy of Vehicle Registration of tow vehicle required.

Save 25% off a 7 day rental rate  
of Turf & Bed Care Equipment, Blowers & Trimmers,  
Commercial Mowers and Misc. Equipment.