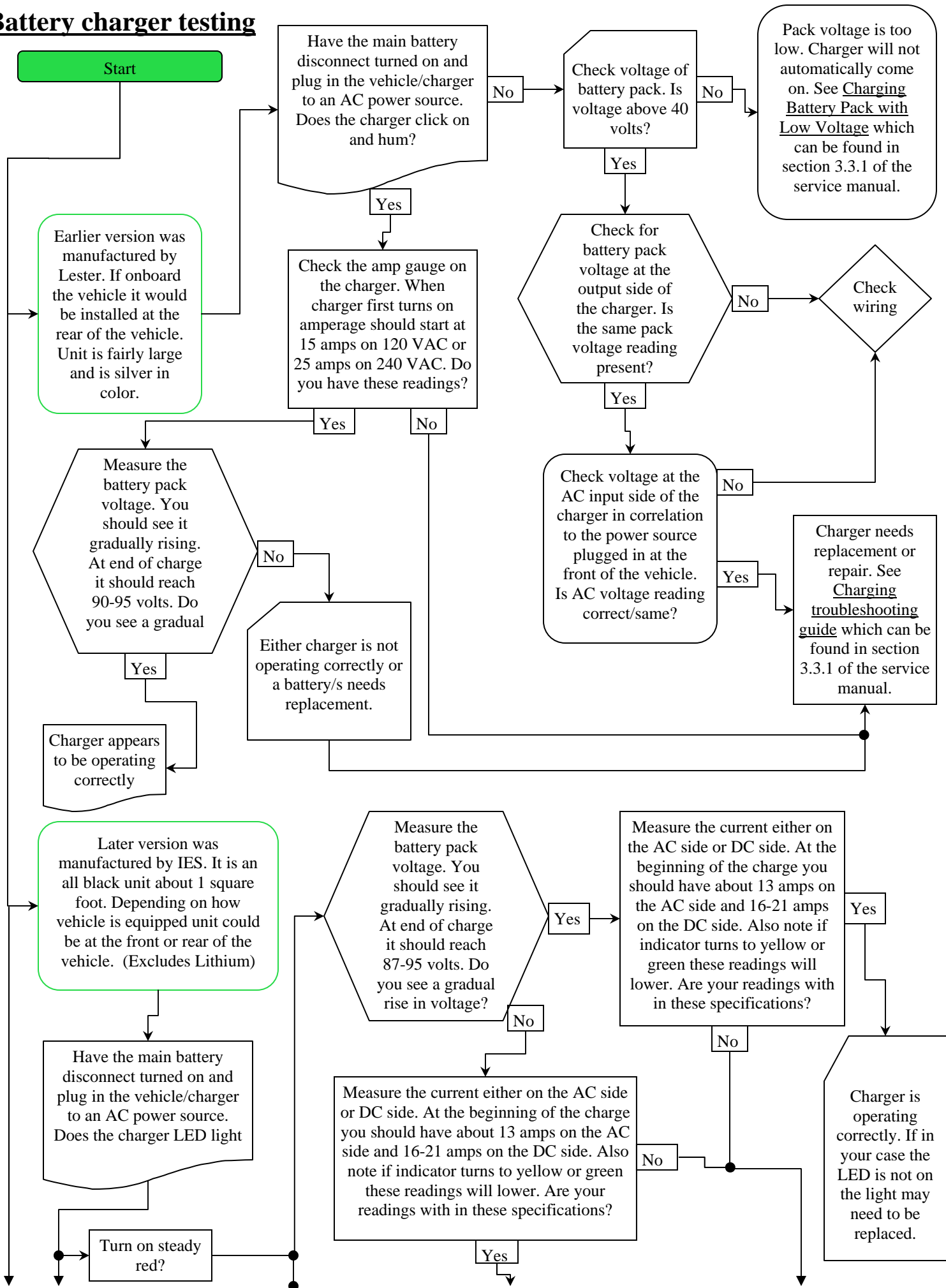
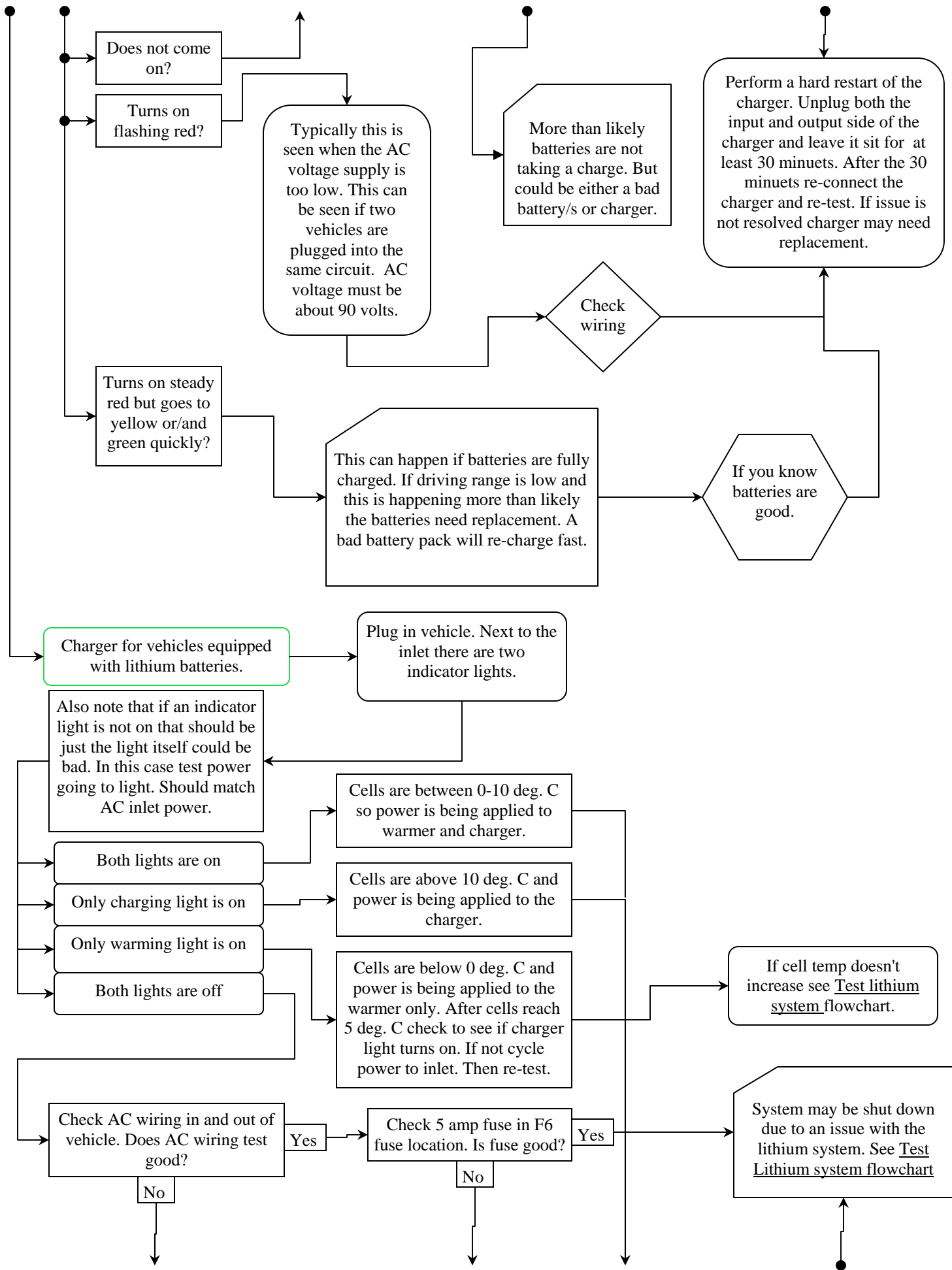


# Battery charger testing





Does not come on?

Turns on flashing red?

Typically this is seen when the AC voltage supply is too low. This can be seen if two vehicles are plugged into the same circuit. AC voltage must be about 90 volts.

More than likely batteries are not taking a charge. But could be either a bad battery/s or charger.

Perform a hard restart of the charger. Unplug both the input and output side of the charger and leave it sit for at least 30 minutes. After the 30 minutes re-connect the charger and re-test. If issue is not resolved charger may need replacement.

Check wiring

Turns on steady red but goes to yellow or/and green quickly?

This can happen if batteries are fully charged. If driving range is low and this is happening more than likely the batteries need replacement. A bad battery pack will re-charge fast.

If you know batteries are good.

Charger for vehicles equipped with lithium batteries.

Plug in vehicle. Next to the inlet there are two indicator lights.

Also note that if an indicator light is not on that should be just the light itself could be bad. In this case test power going to light. Should match AC inlet power.

Both lights are on

Only charging light is on

Only warming light is on

Both lights are off

Cells are between 0-10 deg. C so power is being applied to warmer and charger.

Cells are above 10 deg. C and power is being applied to the charger.

Cells are below 0 deg. C and power is being applied to the warmer only. After cells reach 5 deg. C check to see if charger light turns on. If not cycle power to inlet. Then re-test.

If cell temp doesn't increase see Test lithium system flowchart.

Check AC wiring in and out of vehicle. Does AC wiring test good?

No

Check 5 amp fuse in F6 fuse location. Is fuse good?

No

Yes

System may be shut down due to an issue with the lithium system. See Test Lithium system flowchart

